



**ARMORMAN 4x4**



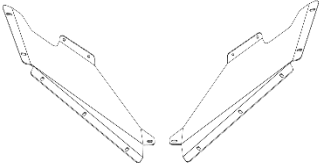
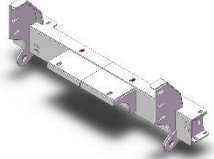
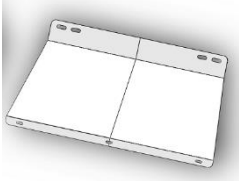
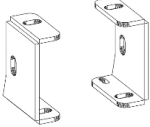




**1300 3075 43**

[Sales@armorman4x4.com.au](mailto:Sales@armorman4x4.com.au)  
[www.armorman4x4.com.au](http://www.armorman4x4.com.au)

## **BUSHMASTER ARMOR BAR- D-MAX 2020+**





<b>1 BAR BODY</b>		<b>1 IN THE MIDDLE NET</b>	
<b>1 PAIR OF WINGS GUARD PLATES</b>		<b>WINCH BRACKET</b>	
<b>1 BOTTOM SKID PLATE</b>		<b>SMALL BRACKET A1 PAIR</b>	
<b>A PAIR OF LIGHTS CONECTORS</b>		<b>A PAIR OF LAMP SHELLS</b>	
<b>A PAIR OF HEADLIGHTS</b>		<b>A PAIR OF INDICATORS LIGHTS</b>	

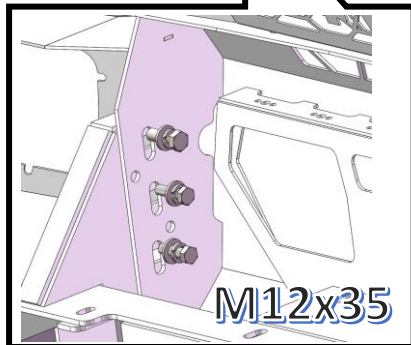
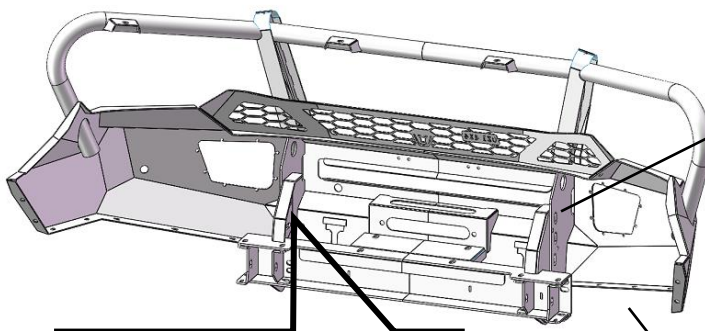
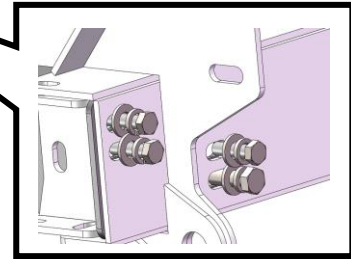
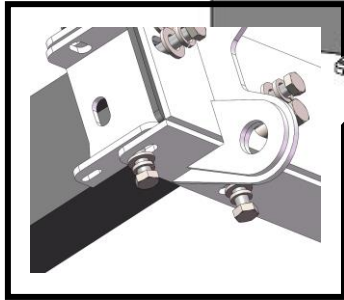
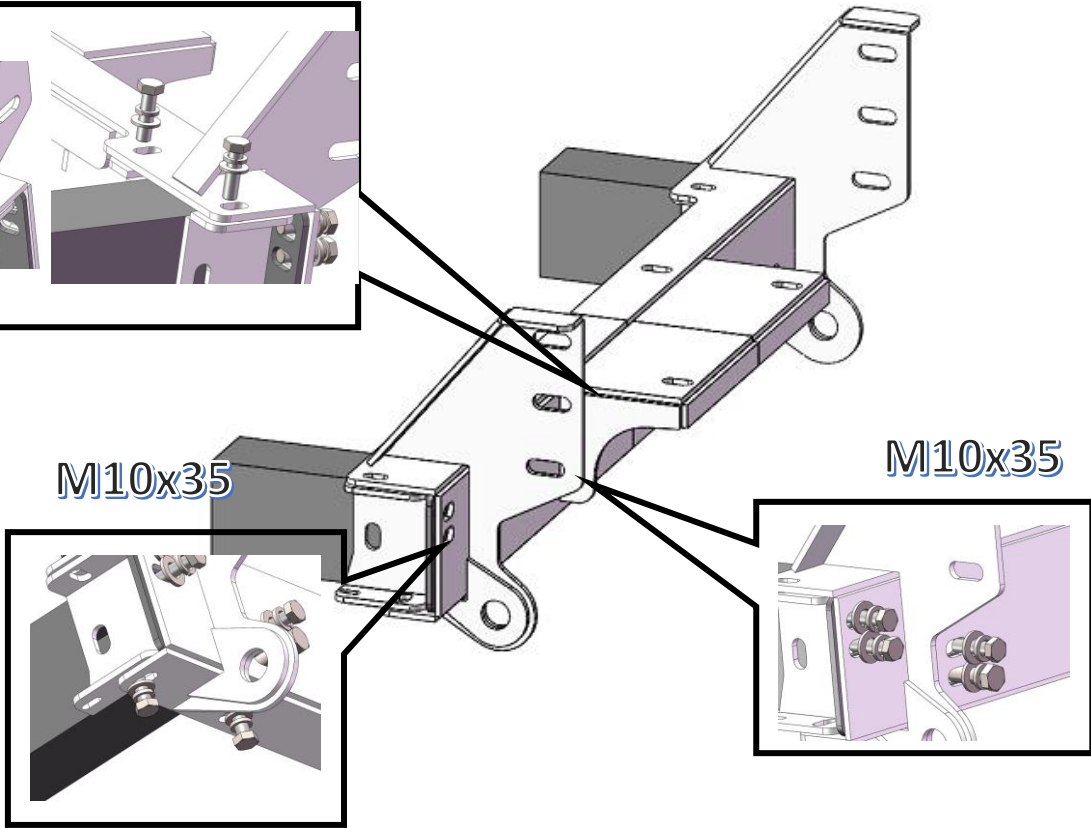
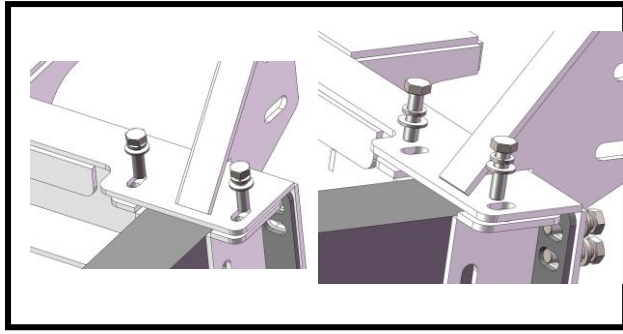


# ARMORMAN 4x4

1300 3075 43

Sales@armorman4x4.com.au  
www.armorman4x4.com.au

M10x35

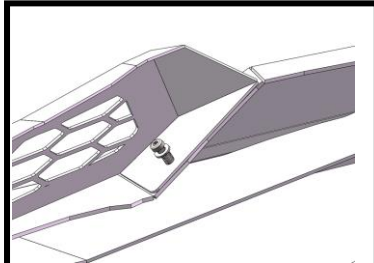




# ARMORMAN 4x4

1300 3075 43

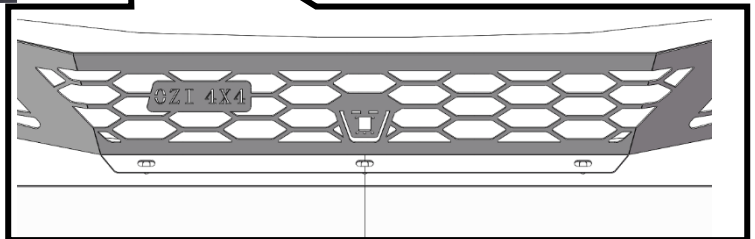
Sales@armorman4x4.com.au  
www.armorman4x4.com.au



M6x20

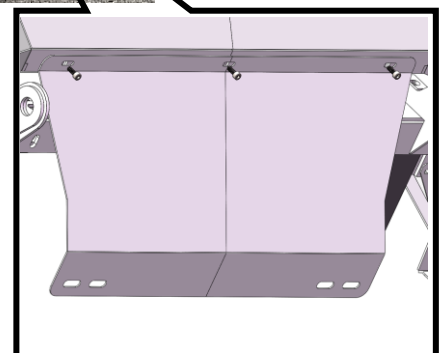
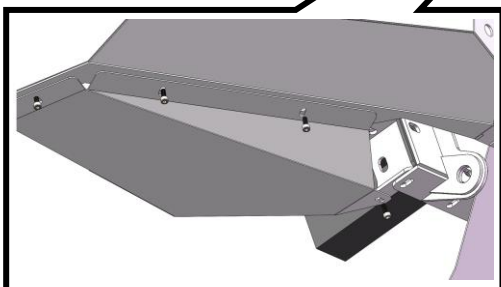


M6x20



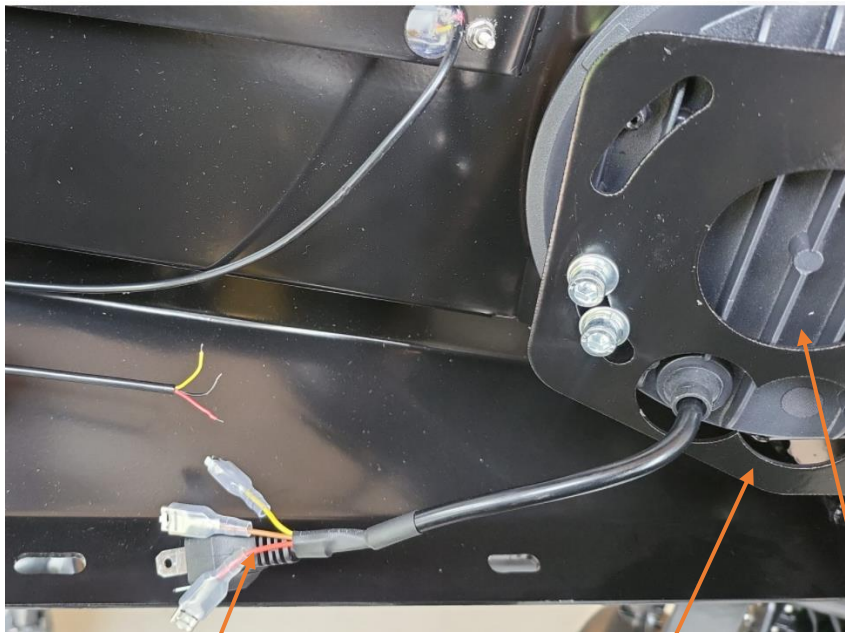
M6x16

M6x16





## 2. DO THE WIRING BASED ON BELLOW WIRING DIAGRAM

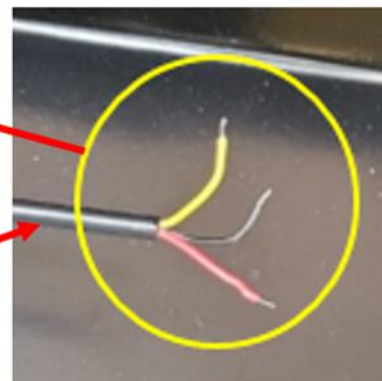


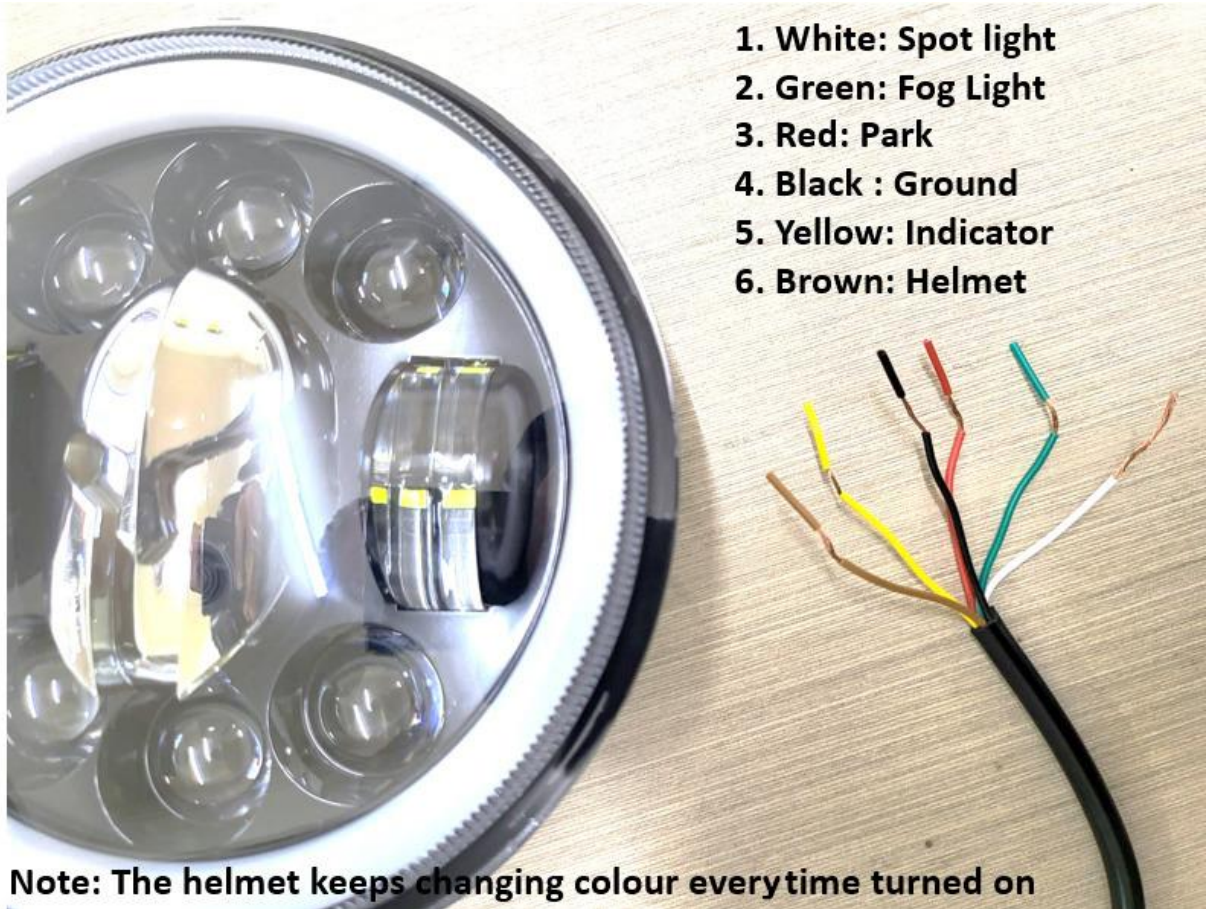
- Red: Park light
- Yellow: Indicator
- Brown: Helmet
- Black: Negative

Fog light  
Bracket

Fog light

DRL WIRE





### 3. FITTING FOG LIGHTS

Use the supplied left and right brackets for fitting the fog lights

Make sure the Fog light to be centered and the ARMORMAN

Writing faced up





**ARMORMAN 4x4**

**1300 3075 43**

[Sales@armorman4x4.com.au](mailto:Sales@armorman4x4.com.au)  
[www.armorman4x4.com.au](http://www.armorman4x4.com.au)

## **LIGHTS**

