



---

## **BUSHMASTER ARMOR BAR PRADO 120 (2003-2009)**



**READ THE INSTALLATION INSTRUCTIONS CAREFULLY TO AVOID DAMAGING.  
THE VEHICLE OR THE COMPETITIVE BAR!!!**

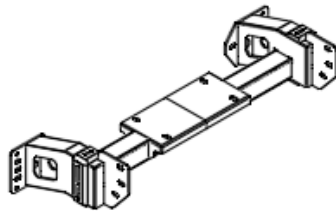


**(PLEASE CHECK THAT THE PART LIST COMPLETE)**

## 1- CHECK THE PART LIST



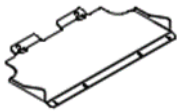
1x Bull Bar



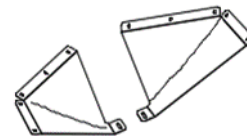
1x Winch Bracket



2X L Bracket



1x Middle under bar plate



2x side under bar plates

## LIGHTS AND OTHER ACCESSORIES



2x light BRACKETS



2x FOG Lights



2x LDE DRL

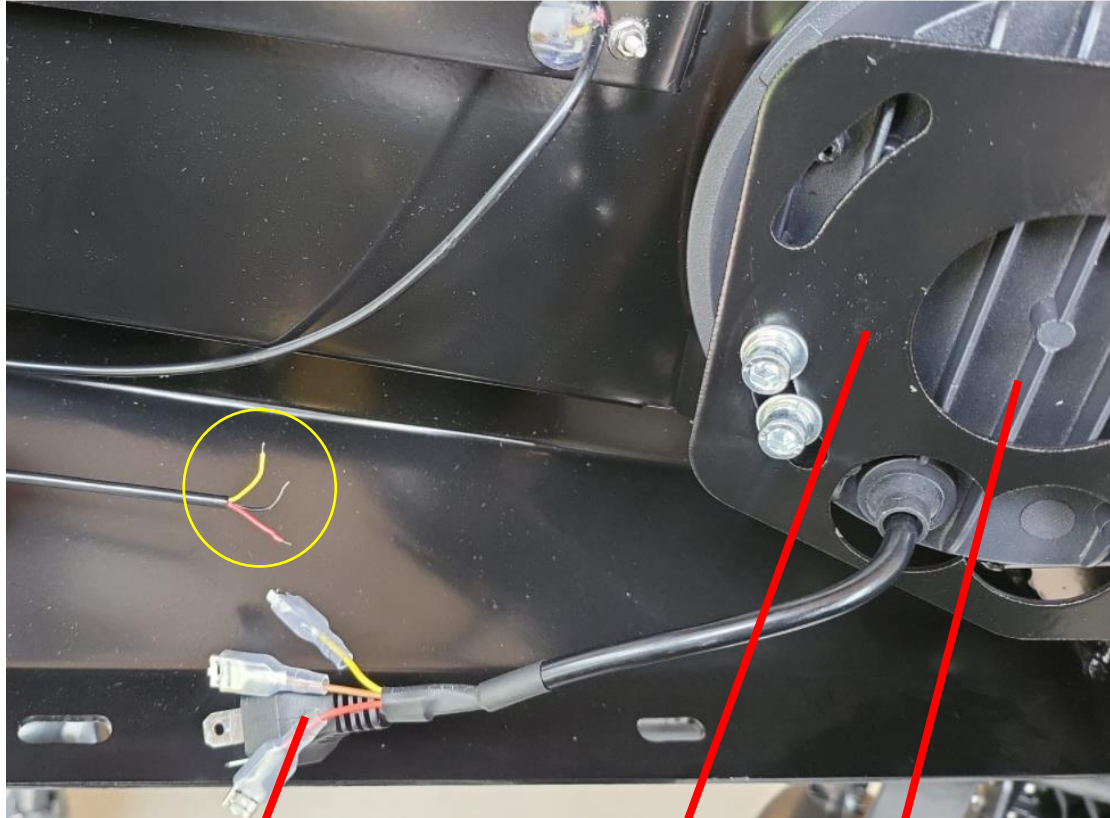


2x FOG LIGHTS  
CONNECTORS

## 2. DO THE WIRING BASED ON BELLOW



## WIRING DIAGRAM

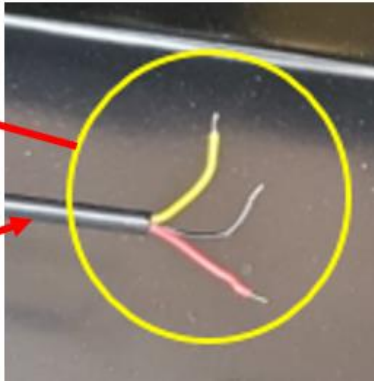


- Red: Park light
- Yellow: Indicator
- Brown: Helmet
- Black: Negative

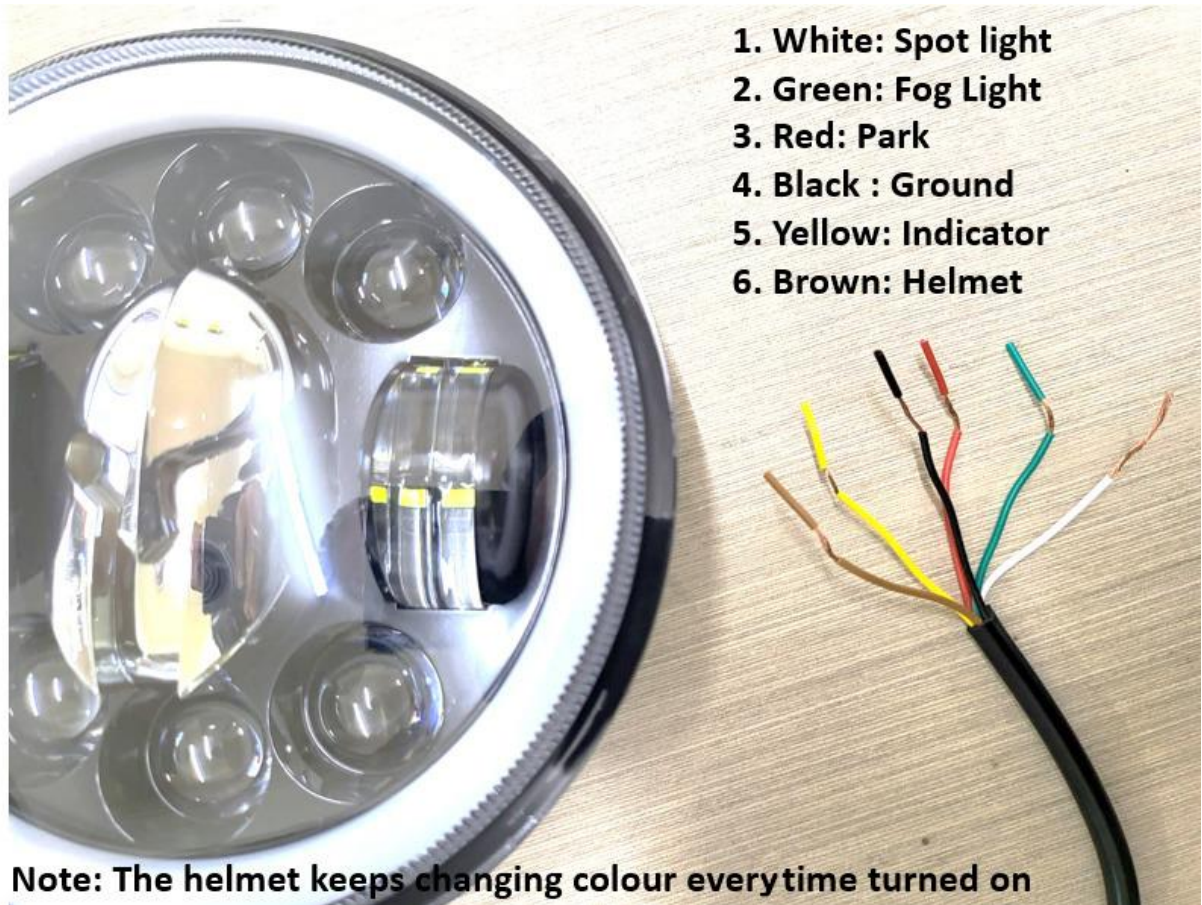
Fog light  
Bracket

Fog light

DRL WIRE







1. White: Spot light
2. Green: Fog Light
3. Red: Park
4. Black : Ground
5. Yellow: Indicator
6. Brown: Helmet

### 3. FITTING FOG LIGHTS

Use the supplied left and right brackets for fitting the fog lights  
Make sure the Fog light to be centered and the ARMORMAN Writing faced up



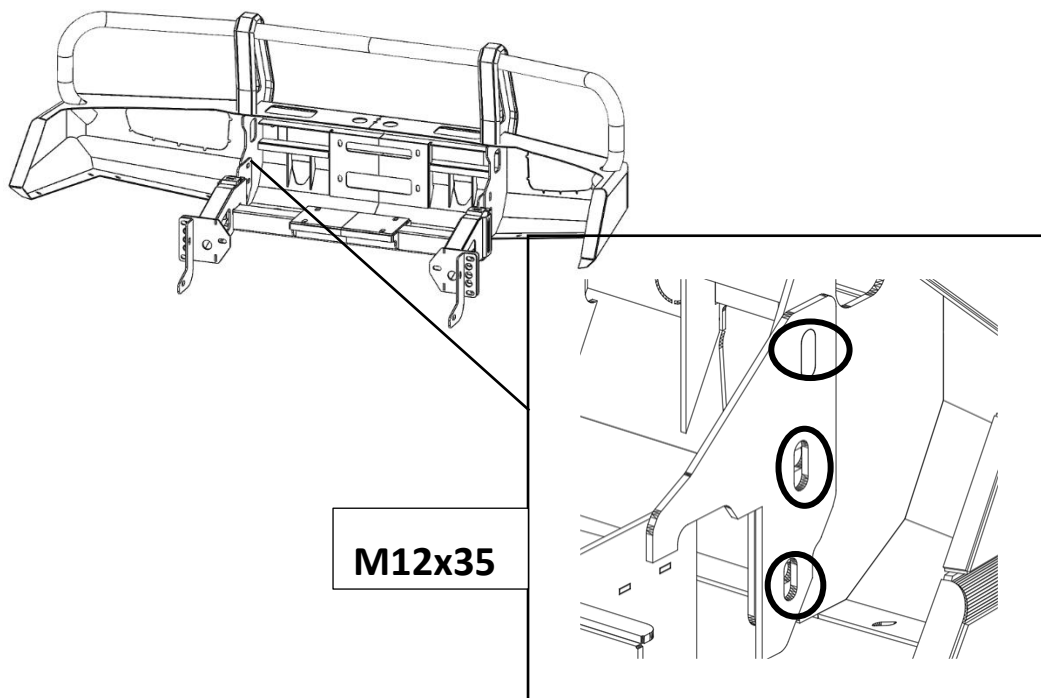
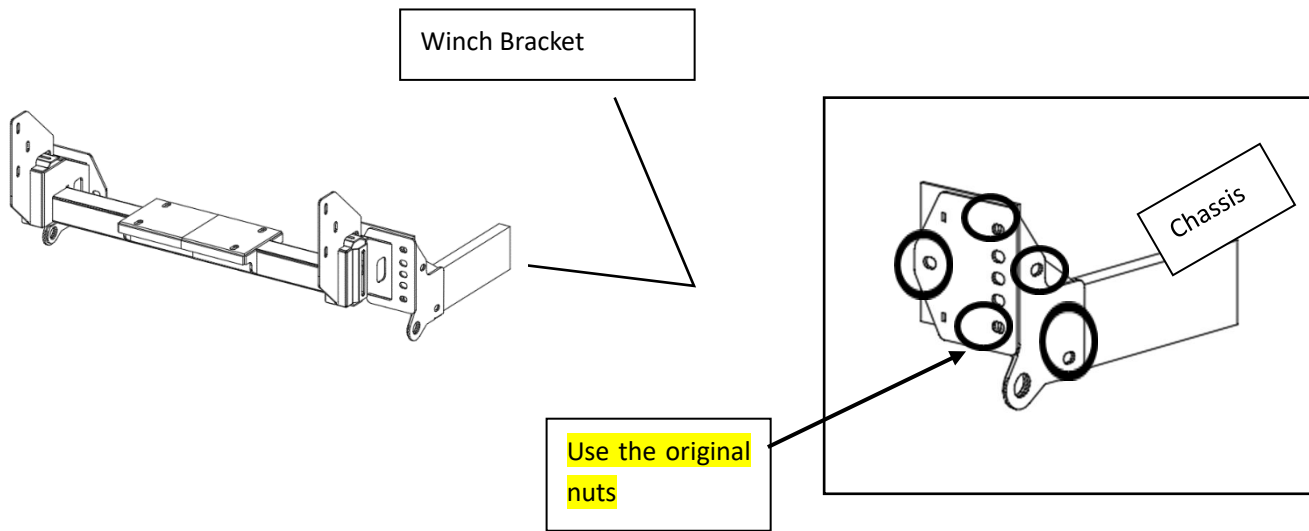


## LIGHTS





## 4. FITTING WINCH BRACKET







## FITTING UNDER BAR PLATES

