



ARMORMAN 4x4

1300 3075 43

Sales@armorman4x4.com.au
www.armorman4x4.com.au

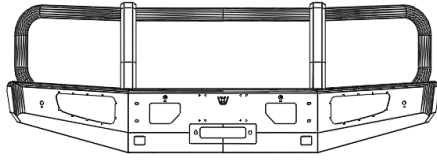
FITTING INSTRUCTIONS GWM CANNON FRONT BUMPER



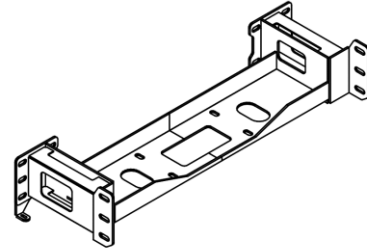


(Please check that the accessories are complete)

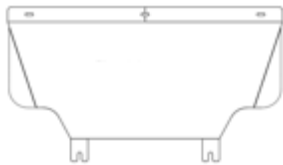
Competitive bars and accessories



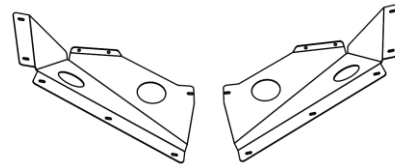
1X Bull Bar



1X winch bracket



1X Center Bash Palte



2X Bash Plates (side)



6xM12x35



35xM6x16



8xM6x16



4xM8 ANTI LOOSEN NUT

LIGHTS & OTHER ACCESSORIES:



2x LAMP CASE



2x HEADLIGHTS



2x LED LIGHTS



1. Check compatibility before starting.

Make sure the bull bar suits your vehicle.

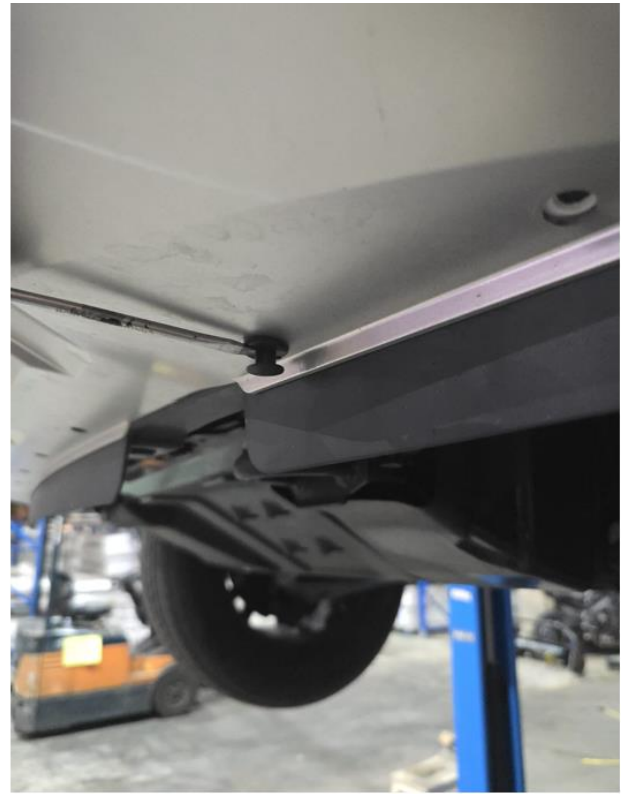
If there's a number plate, take it off and keep it safe to put back later.

Disconnect the negative terminal on the battery.

2. Take off the top plenum cover.

Keep all plastic clips safe for reuse.

Once the cover is off, unplug the front camera wire.





3. Disconnect camera and radar wires.

With the plenum cover off, unplug the front camera and radar.

Unclip the grille and put it somewhere safe.



Note: Don't drop the camera or sonar – they can be damaged easily.

4. Remove the bumper and extras.

Take out all bolts and clips holding the bumper (including splash tray clips). If the car has fog lights, unplug them.

Take off the stone tray or bash plate.

Unclip and remove the bumper and the front part of the fender flares.



5. Take off the factory lower bumper brackets.

Remove and discard the lower bumper support brackets attached to the radiator support.

6. Carefully remove the camera.

After the bumper is off, gently remove the camera.

Important: Do not drop the camera — it can break easily.

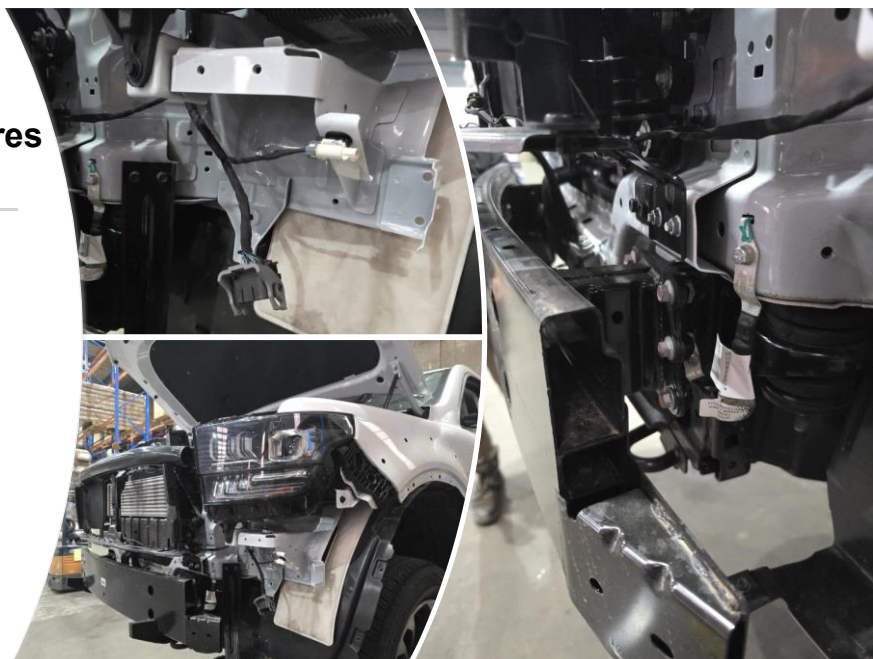
7. Line to Cut the fender of the GWM Cannon

to fit ArmorMan 4x4 Bull bar for
GWM Cannon



Un plug the wires

- Make sure you disconnect the camera and harness plugs before removing the bumper





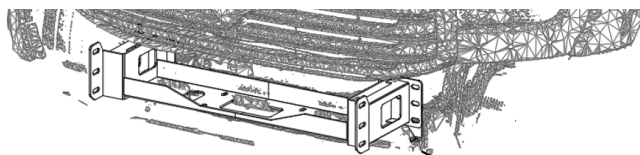
Remove the Crush Bar

- Remove the Crush Bar
- And Remove the Crush Can behind the Crush Bar
- Keep the original bolts to fit the Winch Bracket

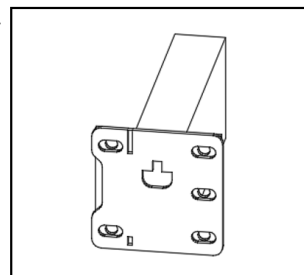


Install the Winch Bracket

- Using the original bolts and make sure you insert the two bolts on the chassis too



Connect using the original car screws

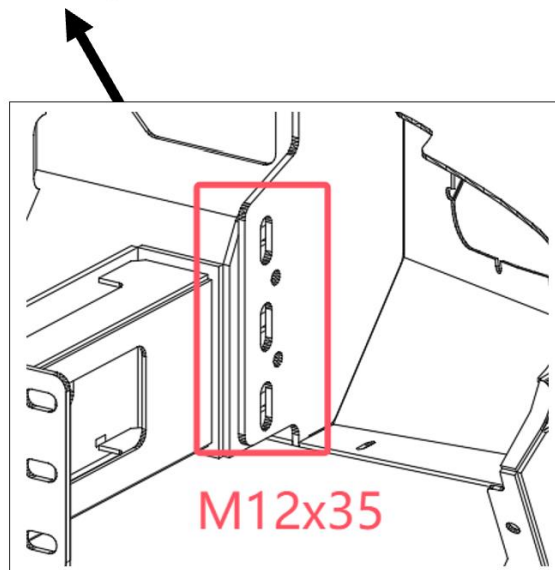
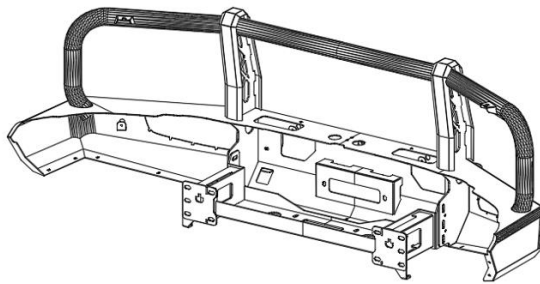
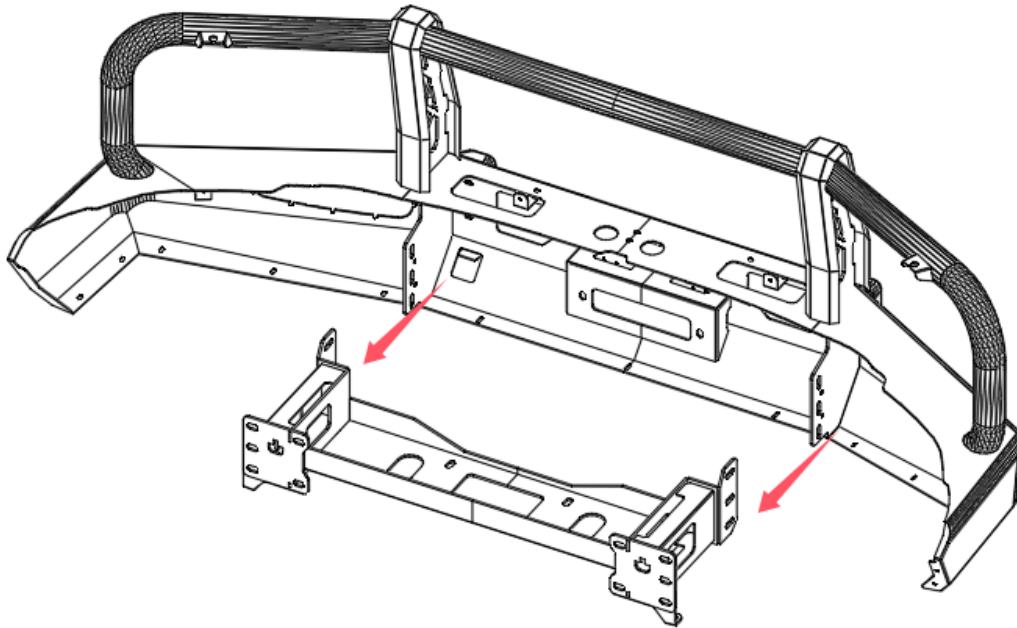


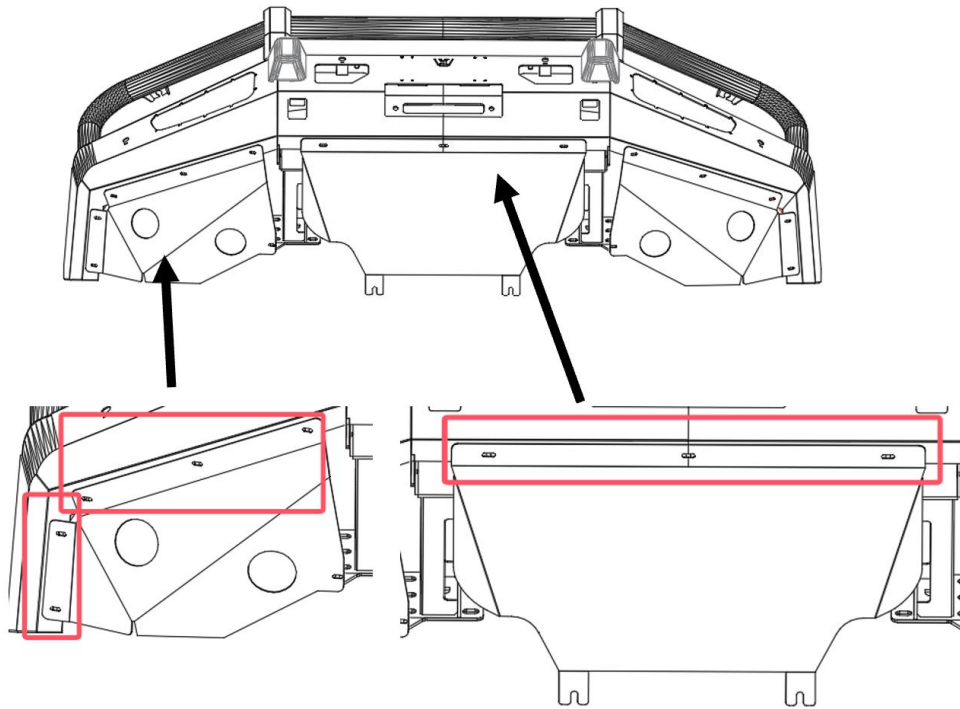


ARMORMAN 4x4

1300 3075 43

Sales@armorman4x4.com.au
www.armorman4x4.com.au





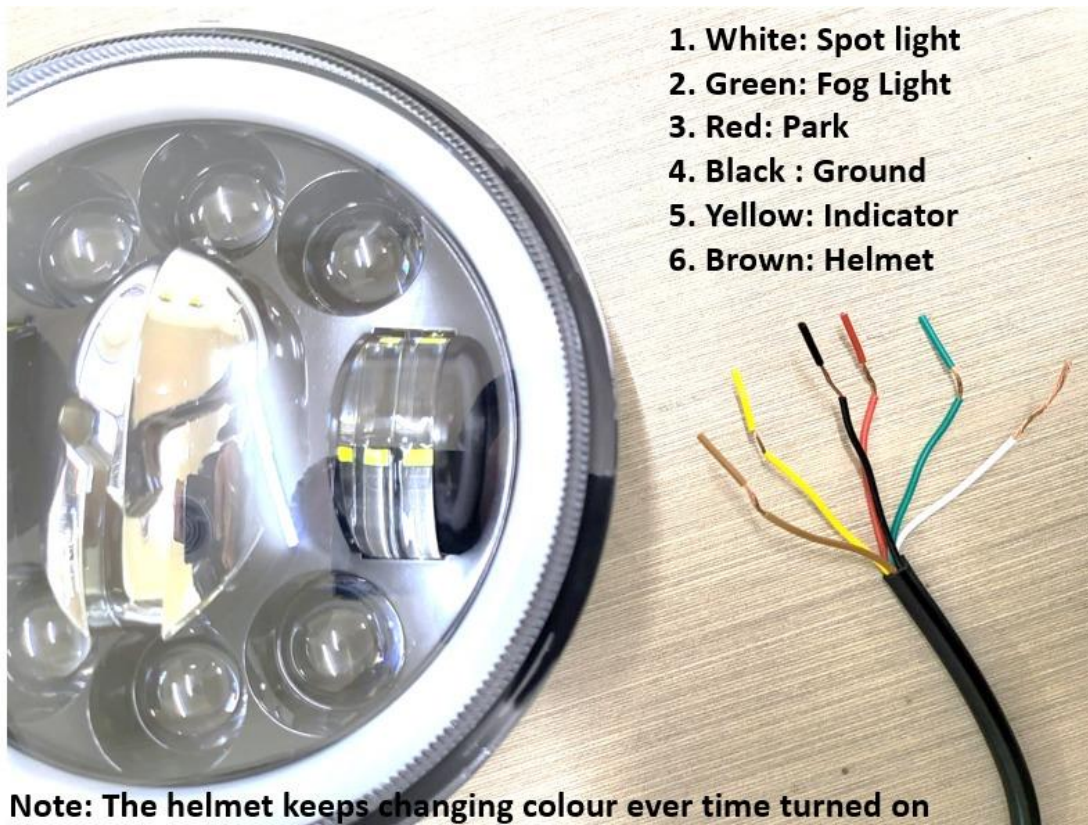
USE M6x16 screws and Flange Nuts



DO THE WIRING BASED ON BELLOW

WIRING DIAGRAM

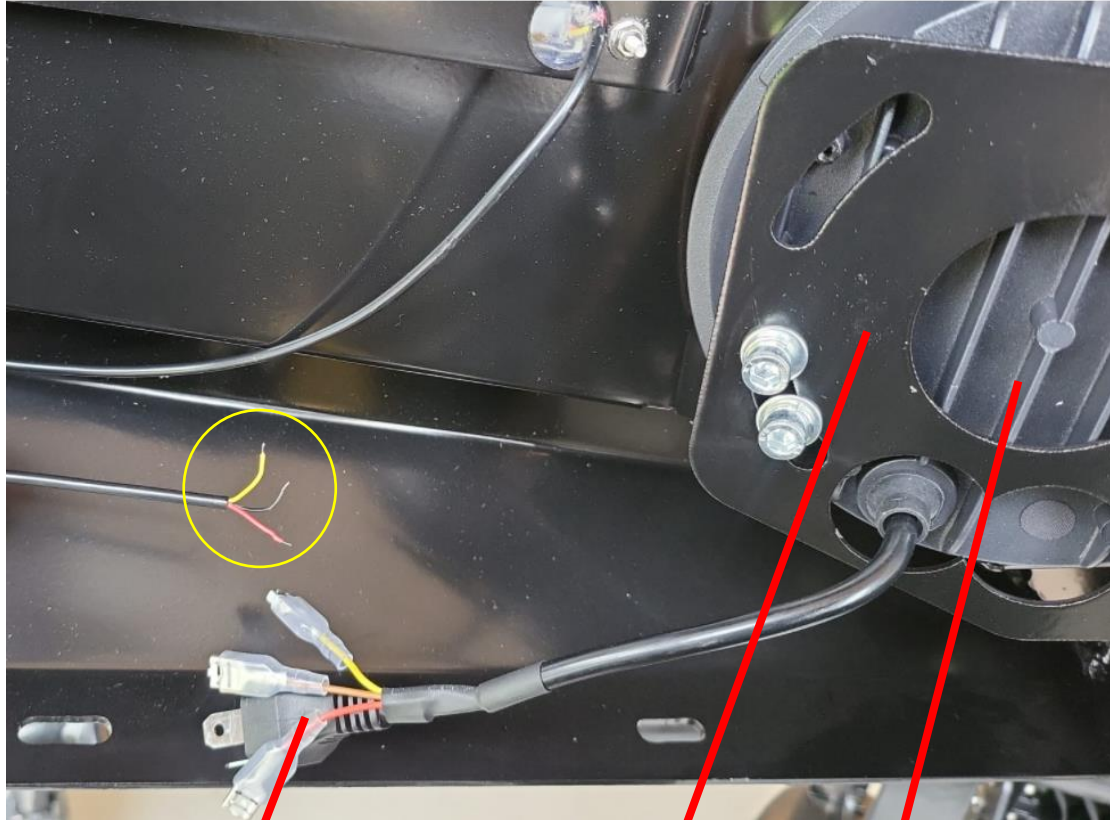
6 PIN PLUG VERSION



Note: The helmet keeps changing colour ever time turned on



IF THREE PIN VERSION

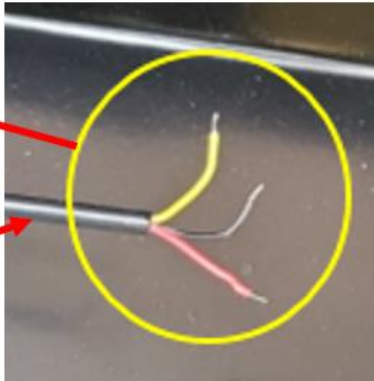


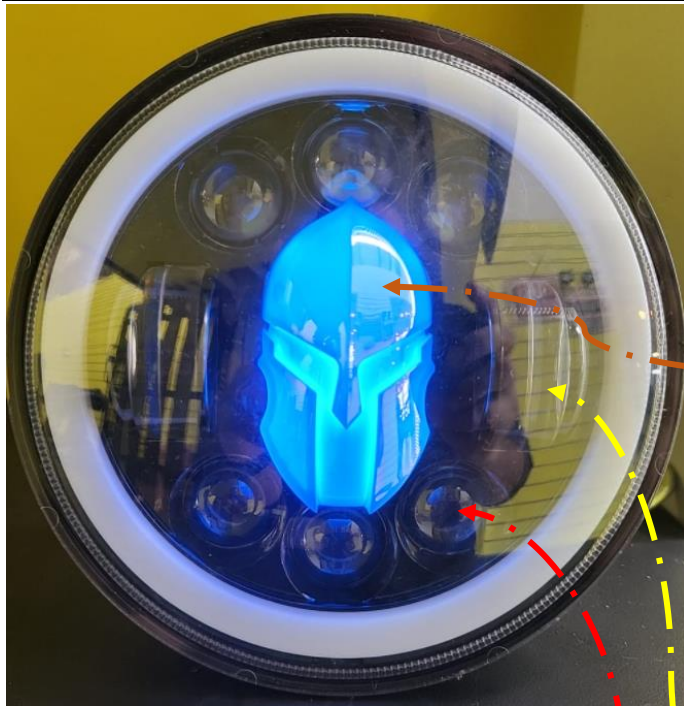
- Red: Park light
- Yellow: Indicator
- Brawn Helmet
- Black: Negative

Fog light
Bracket

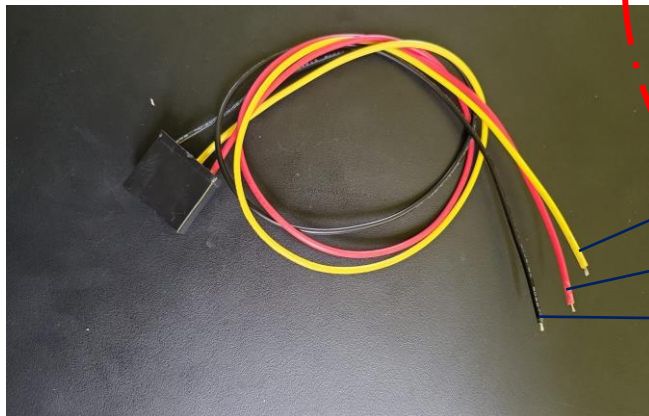
Fog light

DRL WIRE





- Red: Park light
- Yellow: Indicator
- Brown Helmet
- Black: Negative



- Yellow: Fog light
- Red: high Beam
- Black: Negative

3. FITTING FOG LIGHTS

Use the supplied left and right brackets for fitting the fog lights
Make sure the Fog light to be centered and the ARMORMAN Writing faced up





LIGHTS

